

DESCRIPTION

The Preso Coin Flanged flow meter with NPT Pressure Taps accommodates most flows, even the most abrasive. This type of differential technology is a proven, consistent measuring technology for media in upstream, midstream and downstream applications. Accuracy and reliability are achieved with rugged construction, practical design, and a simple principle of operation. The Coin wedge flow meter stands alone in its ability to maintain the necessary square root relationship between flow rate and differential pressure for almost any type of flow.

CONFIGURATION

The inlet section is the same diameter as the incoming pipe section and followed by a precise, segmented, angled section equal on both sides for bidirectional flow measurement. The H/ID ratio is determined by the manufacturer according to recognized standards and formulas. The discharge coefficient (Cd) is linear and stable in the operating flow range.

ACCURACY AND REPEATABILITY

The accuracy of the Coin meter is within $\pm 3.0\%$ (uncalibrated) and $\pm 0.5\%$ (calibrated) with a repeatability of $\pm 0.2\%$ and turndown of 10:1 in the corresponding range of Reynolds' Numbers. For custody transfer applications the Coin meter is flow tested by an independent NIST certified laboratory under the design operating conditions and piping configurations.

APPLICATIONS

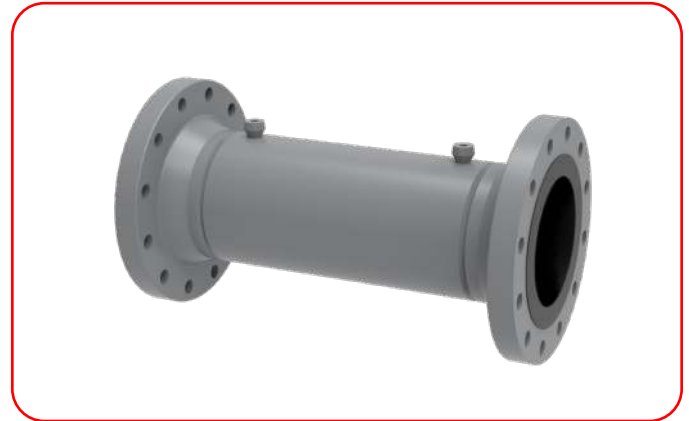
Typical core applications for Wedge meters include high-viscosity fluids, slurries, corrosive fluids, contaminated air/gas, and more.

DIFFERENTIATOR

The wedge meter functions similarly to a segmental orifice. A segmental orifice still has a small restriction in the line around the opening. The wedge design allows solids and particulates to be swept through the opening. It also enables measurements with Reynolds Numbers down in the laminar range to 500 as a minimum. Wedge meters generally have a higher turndown ratio than segmental orifice plates.

BENEFITS

- Abrasive and erosive slurries, viscous and dirty fluids, clean fluids, steam or gasses
- Bi-Directional flow measurement



- Easily installed in any position with minimal straight pipe requirements
- Reduced pumping costs

FEATURES

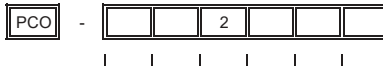
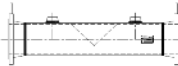
- Reduced pumping costs
- Turndown ratio: 10:1
- Mass flow output with multivariable transmitter (accuracy $\pm 0.5\%$ calibrated)
- Repeatability: $\pm 0.2\%$ of readings
- Reynolds number measurement down to 300
- High viscosity measurement to 3000 and higher
- Sizes 0.5... 16 in.
- Manufactured to ASME, ANSI B31.1, NACE MR-0175, CSA-Z299.3
- ISO-9001 certified design and fabrication

SPECIFICATIONS

Applications	Water, oil, steam, air/gas, other liquids.
Pipe Sizes	0.5... 16 in. (12.70...406.40 mm)
Temperature Range	Up to 800° F (426.67° C)
Pressure Range	Depends on flange rating
Accuracy	$\pm 3.0\%$ uncalibrated; up to 0.5% calibrated
Repeatability	$\pm 0.2\%$
Turndown Ratio	10:1

PART NUMBERING CONSTRUCTION

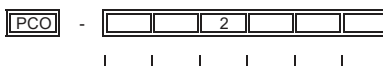
COIN® Segmented Wedge
 STAINLESS STEEL - SCH STD
 Flanged WN



Continued on next page

PIPE SIZE		A				
1/2"		B				
3/4"		C				
1"		D				
1-1/4"		E				
1-1/2"		F				
2"		G				
2-1/2"		H				
3"		I				
4"		J				
5"		K				
6"		L				
8"		M				
10"		N				
12"		O				
14"		P				
16"		X				
Call for extended sizes						
SCHEDULE			A			
STD						
Call for extended Schedules						
BODY / WEDGE MATERIAL					2	
316/316L Body / 316/316L Wedge						
PROCESS CONNECTION						
RF flange 150# WN				A		
RF flange 300# WN				B		
INSTRUMENT CONNECTION						
1/4" NPT (1/2...3" NPS)					H	
1/2" NPT (>3" NPS)					I	
1/2" Socket Weld					J	
BETA						
(0.2) Low Flow						1
(0.3) Med/Low Flow						2
(0.4) Normal Flow						3
(0.5) High Flow						4

COIN® Segmented Wedge
 STAINLESS STEEL - SCH XS
 Flanged WN



Continued on next page

PIPE SIZE		A				
1/2"		B				
3/4"		C				
1"		D				
1-1/4"		E				
1-1/2"		F				
2"		G				
2-1/2"		H				
3"		I				
4"		J				
5"		K				
6"		L				
8"		M				
10"		N				
12"		O				
14"		P				
16"		X				
Call for extended sizes						
SCHEDULE			L			
XS						
Call for extended Schedules						
BODY / WEDGE MATERIAL					2	
316/316L Body / 316/316L Wedge						
PROCESS CONNECTION						
RF flange 150# WN				A		
RF flange 300# WN				B		
INSTRUMENT CONNECTION						
1/4" NPT (1/2...3" NPS)					H	
1/2" NPT (>3" NPS)					I	
1/2" Socket Weld					J	
BETA						
(0.2) Low Flow						1
(0.3) Med/Low Flow						2
(0.4) Normal Flow						3
(0.5) High Flow						4

Continued from
previous page



<u>INSTRUMENT VALVE</u>							
Not Required	Z						
1/4" Needle CS	A						
1/2" Needle CS	B						
1/4" Needle SS	C						
1/2" Needle SS	D						
1/2" Gate w/Cross CS (Steam)	E						
1/2" Gate w/Cross SS (Steam)	F						
<u>CALIBRATION</u>							
Not Required	Z						
Factory Calibration (6 point)	1						
Special Factory Calibration	2						
External Calibration	3						
<u>TRANSMITTER MOUNTING</u>							
Remote Mount	Z						
Mounting Bracket Tee (only)	2						
Manifold Mounting Plate- Meter Mount (Does not include manifold)	3						
<u>CERTIFICATIONS</u>							
None	Z						
Tracable Material Certifications	1						
NACE MR0-103	2						
NACE MR0-175	3						
Items 1 and 2	4						
Items 1 and 3	5						
Other	X						
<u>STANDARD NDE TESTING</u>							
None	Z						
Hydrostatic Test Only (1/2...12" NPS 150# to 900# flange - Others CF)	1						
5% Radiography of Butt Welds	2						
100% Radiography of Butt Welds	3						
5% Magnetic particle/dye penetrant	4						
100% magnetic particle/dye penetrant	5						
Items 2 and 4 (1/2...12" NPS - Others CF)	6						
Items 3 and 4 (1/2...12" NPS - Others CF)	7						
Items 3 and 5 (1/2...12" NPS - Others CF)	8						
Other	X						
Note: Items 2-8 also include hydrostatic testing							
<u>OTHER NDE TESTING</u>							
None	Z						
100% Visual Inspection with Report	1						
PMI (Positive Material Identification)	2						
Post-Weld Harness Testing	3						
Items 1 and 2	4						
Items 3 and 4	5						
Items 1, 2 and 3	6						
<u>HARDCOATING</u>							
None	Z						
Tungsten Carbide (WC) on wedge	1						
Tungsten Carbide (WC) on center 1/3 of meter	2						
Chromium Carbide (CrC) on wedge	3						
Chromium Carbide (CrC) on center 1/3 of meter	4						
Other	X						
<u>TERTIARY TAP</u>							
None	Z						
3/4" Standard RTD Temperature with Thermowell (-200... 450° F)	A						
3/4" High Temperature RTD Temperature (-200... 1000° F)	B						
1/2" Pressure Tap w/o transmitter	C						
1/2" Pressure Absolute with transmitter	D						
1/2" Pressure Gauge with transmitter	E						

COIN® Segmented Wedge
 STAINLESS STEEL - SCH 160
 FLANGED WN



PCO	-		K	2			
-----	---	--	---	---	--	--	--

Continued on next page

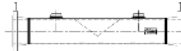
PIPE SIZE		A					
1/2"		B					
3/4"		C					
1"		D					
1-1/4"		E					
1-1/2"		F					
2"		G					
2-1/2"		H					
3"		I					
4"		J					
5"		K					
6"		L					
8"		M					
10"		N					
12"		O					
14"		P					
16"		X					
Call for extended sizes							
SCHEDULE							
160				K			
Call for extended Schedules							
BODY / WEDGE MATERIAL							
316/316L Body / 316/316L Wedge					2		
PROCESS CONNECTION							
RF flange 150# WN						A	
RF flange 300# WN						B	
INSTRUMENT CONNECTION							
1/4" NPT (1/2...3" NPS)							H
1/2" NPT (>3" NPS)							I
1/2" Socket Weld							J
BETA							
(0.2) Low Flow							1
(0.3) Med/Low Flow							2
(0.4) Normal Flow							3
(0.5) High Flow							4

Continued from
previous page



<u>INSTRUMENT VALVE</u>							
Not Required	Z						
1/4" Needle CS	A						
1/2" Needle CS	B						
1/4" Needle SS	C						
1/2" Needle SS	D						
1/2" Gate w/Cross CS (Steam)	E						
1/2" Gate w/Cross SS (Steam)	F						
<u>CALIBRATION</u>							
Not Required	Z						
Factory Calibration (6 point)	1						
Special Factory Calibration	2						
External Calibration	3						
<u>TRANSMITTER MOUNTING</u>							
Remote Mount	Z						
Mounting Bracket Tee (only)	2						
Manifold Mounting Plate- Meter Mount (Does not include manifold)	3						
<u>CERTIFICATIONS</u>							
None	Z						
Tracable Material Certifications	1						
NACE MR0-103	2						
NACE MR0-175	3						
Items 1 and 2	4						
Items 1 and 3	5						
Other	X						
<u>STANDARD NDE TESTING</u>							
None	Z						
Hydrostatic Test Only (1/2...12" NPS 150# to 900# flange - Others CF)	1						
5% Radiography of Butt Welds	2						
100% Radiography of Butt Welds	3						
5% Magnetic particle/dye penetrant	4						
100% magnetic particle/dye penetrant	5						
Items 2 and 4 (1/2...12" NPS - Others CF)	6						
Items 3 and 4 (1/2...12" NPS - Others CF)	7						
Items 3 and 5 (1/2...12" NPS - Others CF)	8						
Other	X						
Note: Items 2-8 also include hydrostatic testing							
<u>OTHER NDE TESTING</u>							
None	Z						
100% Visual Inspection with Report	1						
PMI (Positive Material Identification)	2						
Post-Weld Harness Testing	3						
Items 1 and 2	4						
Items 3 and 4	5						
Items 1, 2 and 3	6						
<u>HARDCOATING</u>							
None	Z						
Tungsten Carbide (WC) on wedge	1						
Tungsten Carbide (WC) on center 1/3 of meter	2						
Chromium Carbide (CrC) on wedge	3						
Chromium Carbide (CrC) on center 1/3 of meter	4						
Other	X						
<u>TERTIARY TAP</u>							
None	Z						
3/4" Standard RTD Temperature with Thermowell (-200... 450° F)	A						
3/4" High Temperature RTD Temperature (-200... 1000° F)	B						
1/2" Pressure Tap w/o transmitter	C						
1/2" Pressure Absolute with transmitter	D						
1/2" Pressure Gauge with transmitter	E						

COIN® Segmented Wedge
STAINLESS STEEL - SCH STD
Flanged SO



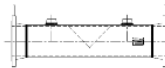
PCO

		2			
--	--	---	--	--	--

Continued on next page

PIPE SIZE					
1/2"	A				
3/4"	B				
1"	C				
1-1/4"	D				
1-1/2"	E				
2"	F				
2-1/2"	G				
3"	H				
4"	I				
5"	J				
6"	K				
8"	L				
10"	M				
12"	N				
14"	O				
16"	P				
Call for extended sizes					
SCHEDULE					
STD		A			
Call for extended Schedules					
BODY / WEDGE MATERIAL					
316/316L Body / 316/316L Wedge			2		
PROCESS CONNECTION					
SORF 150# FLANGE				J	
SORF 300# FLANGE				K	
INSTRUMENT CONNECTION					
1/4" NPT (1/2...3" NPS)				H	
1/2" NPT (>3" NPS)				I	
1/2" Socket Weld				J	
BETA					
(0.2) Low Flow					1
(0.3) Med/Low Flow					2
(0.4) Normal Flow					3
(0.5) High Flow					4

COIN® Segmented Wedge
STAINLESS STEEL - SCH XS
Flanged SO



PCO

		2			
--	--	---	--	--	--

Continued on next page

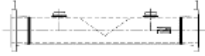
PIPE SIZE					
1/2"	A				
3/4"	B				
1"	C				
1-1/4"	D				
1-1/2"	E				
2"	F				
2-1/2"	G				
3"	H				
4"	I				
5"	J				
6"	K				
8"	L				
10"	M				
12"	N				
14"	O				
16"	P				
Call for extended sizes					
SCHEDULE					
XS		L			
Call for extended Schedules					
BODY / WEDGE MATERIAL					
316/316L Body / 316/316L Wedge			2		
PROCESS CONNECTION					
SORF 150# FLANGE				J	
SORF 300# FLANGE				K	
INSTRUMENT CONNECTION					
1/4" NPT (1/2...3" NPS)				H	
1/2" NPT (>3" NPS)				I	
1/2" Socket Weld				J	
BETA					
(0.2) Low Flow					1
(0.3) Med/Low Flow					2
(0.4) Normal Flow					3
(0.5) High Flow					4

Continued from
previous page



<u>INSTRUMENT VALVE</u>							
Not Required	Z						
1/4" Needle CS	A						
1/2" Needle CS	B						
1/4" Needle SS	C						
1/2" Needle SS	D						
1/2" Gate w/Cross CS (Steam)	E						
1/2" Gate w/Cross SS (Steam)	F						
<u>CALIBRATION</u>							
Not Required	Z						
Factory Calibration (6 point)	1						
Special Factory Calibration	2						
External Calibration	3						
<u>TRANSMITTER MOUNTING</u>							
Remote Mount	Z						
Mounting Bracket Tee (only)	2						
Manifold Mounting Plate- Meter Mount (Does not include manifold)	3						
<u>CERTIFICATIONS</u>							
None	Z						
Tracable Material Certifications	1						
NACE MR0-103	2						
NACE MR0-175	3						
Items 1 and 2	4						
Items 1 and 3	5						
Other	X						
<u>STANDARD NDE TESTING</u>							
None	Z						
Hydrostatic Test Only (1/2...12" NPS 150# to 900# flange - Others CF)	1						
5% Radiography of Butt Welds	2						
100% Radiography of Butt Welds	3						
5% Magnetic particle/dye penetrant	4						
100% magnetic particle/dye penetrant	5						
Items 2 and 4 (1/2...12" NPS - Others CF)	6						
Items 3 and 4 (1/2...12" NPS - Others CF)	7						
Items 3 and 5 (1/2...12" NPS - Others CF)	8						
Other	X						
Note: Items 2-8 also include hydrostatic testing							
<u>OTHER NDE TESTING</u>							
None	Z						
100% Visual Inspection with Report	1						
PMI (Positive Material Identification)	2						
Post-Weld Harness Testing	3						
Items 1 and 2	4						
Items 3 and 4	5						
Items 1, 2 and 3	6						
<u>HARDCOATING</u>							
None	Z						
Tungsten Carbide (WC) on wedge	1						
Tungsten Carbide (WC) on center 1/3 of meter	2						
Chromium Carbide (CrC) on wedge	3						
Chromium Carbide (CrC) on center 1/3 of meter	4						
Other	X						
<u>TERTIARY TAP</u>							
None	Z						
3/4" Standard RTD Temperature with Thermowell (-200... 450° F)	A						
3/4" High Temperature RTD Temperature (-200...1000° F)	B						
1/2" Pressure Tap w/o transmitter	C						
1/2" Pressure Absolute with transmitter	D						
1/2" Pressure Gauge with transmitter	E						

COIN® Segmented Wedge
 STAINLESS STEEL - 160 SCH
 Flanged SO



PCO

		2			
--	--	---	--	--	--

Continued on next page

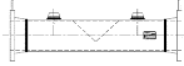
PIPE SIZE					
1/2"	A				
3/4"	B				
1"	C				
1-1/4"	D				
1-1/2"	E				
2"	F				
2-1/2"	G				
3"	H				
4"	I				
5"	J				
6"	K				
8"	L				
10"	M				
12"	N				
14"	O				
16"	P				
Call for extended sizes	X				
SCHEDULE					
160				K	
Call for extended Schedules					
BODY / WEDGE MATERIAL					
316/316L Body / 316/316L Wedge			2		
PROCESS CONNECTION					
SORF 150# FLANGE				J	
SORF 300# FLANGE				K	
INSTRUMENT CONNECTION					
1/4" NPT (1/2...3" NPS)					H
1/2" NPT (>3" NPS)					I
1/2" Socket Weld					J
BETA					
(0.2) Low Flow					1
(0.3) Med/Low Flow					2
(0.4) Normal Flow					3
(0.5) High Flow					4

Continued from
previous page



<u>INSTRUMENT VALVE</u>							
Not Required	Z						
1/4" Needle CS	A						
1/2" Needle CS	B						
1/4" Needle SS	C						
1/2" Needle SS	D						
1/2" Gate w/Cross CS (Steam)	E						
1/2" Gate w/Cross SS (Steam)	F						
<u>CALIBRATION</u>							
Not Required	Z						
Factory Calibration (6 point)	1						
Special Factory Calibration	2						
External Calibration	3						
<u>TRANSMITTER MOUNTING</u>							
Remote Mount	Z						
Mounting Bracket Tee (only)	2						
Manifold Mounting Plate- Meter Mount (Does not include manifold)	3						
<u>CERTIFICATIONS</u>							
None	Z						
Tracable Material Certifications	1						
NACE MR0-103	2						
NACE MR0-175	3						
Items 1 and 2	4						
Items 1 and 3	5						
Other	X						
<u>STANDARD NDE TESTING</u>							
None	Z						
Hydrostatic Test Only (1/2...12" NPS 150# to 900# flange - Others CF)	1						
5% Radiography of Butt Welds	2						
100% Radiography of Butt Welds	3						
5% Magnetic particle/dye penetrant	4						
100% magnetic particle/dye penetrant	5						
Items 2 and 4 (1/2...12" NPS - Others CF)	6						
Items 3 and 4 (1/2...12" NPS - Others CF)	7						
Items 3 and 5 (1/2...12" NPS - Others CF)	8						
Other	X						
Note: Items 2-8 also include hydrostatic testing							
<u>OTHER NDE TESTING</u>							
None	Z						
100% Visual Inspection with Report	1						
PMI (Positive Material Identification)	2						
Post-Weld Harness Testing	3						
Items 1 and 2	4						
Items 3 and 4	5						
Items 1, 2 and 3	6						
<u>HARDCOATING</u>							
None	Z						
Tungsten Carbide (WC) on wedge	1						
Tungsten Carbide (WC) on center 1/3 of meter	2						
Chromium Carbide (CrC) on wedge	3						
Chromium Carbide (CrC) on center 1/3 of meter	4						
Other	X						
<u>TERTIARY TAP</u>							
None	Z						
3/4" Standard RTD Temperature with Thermowell (-200... 450° F)	A						
3/4" High Temperature RTD Temperature (-200...1000° F)	B						
1/2" Pressure Tap w/o transmitter	C						
1/2" Pressure Absolute with transmitter	D						
1/2" Pressure Gauge with transmitter	E						

COIN® Segmented Wedge
Carbon Steel - SCH STD
Flanged WN



PCO

--	--	--	--	--	--	--	--	--	--

Continued on next page

PIPE SIZE

- 1/2"
- 3/4"
- 1"
- 1-1/4"
- 1-1/2"
- 2"
- 2-1/2"
- 3"
- 4"
- 5"
- 6"
- 8"
- 10"
- 12"
- 14"
- 16"
- Call for extended sizes

- A
- B
- C
- D
- E
- F
- G
- H
- I
- J
- K
- L
- M
- N
- O
- P
- X

SCHEDULE

- STD
- Call for extended Schedules

A

BODY / WEDGE MATERIAL

- CS Body / CS Wedge
- CS Body / 316/316L Wedge

- 1
- 3

PROCESS CONNECTION

- RF flange 150# WN
- RF flange 300# WN

- A
- B

INSTRUMENT CONNECTION

- 1/4" NPT (1/2...3" NPS)
- 1/2" NPT (>3" NPS)
- 1/2" Socket Weld

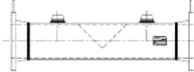
- H
- I
- J

BETA

- (0.2) Low Flow
- (0.3) Med/Low Flow
- (0.4) Normal Flow
- (0.5) High Flow

- 1
- 2
- 3
- 4

COIN® Segmented Wedge
Carbon Steel - SCH XS
Flanged WN



PCO

--	--	--	--	--	--	--	--	--	--

Continued on next page

PIPE SIZE

- 1/2"
- 3/4"
- 1"
- 1-1/4"
- 1-1/2"
- 2"
- 2-1/2"
- 3"
- 4"
- 5"
- 6"
- 8"
- 10"
- 12"
- 14"
- 16"
- Call for extended sizes

- A
- B
- C
- D
- E
- F
- G
- H
- I
- J
- K
- L
- M
- N
- O
- P
- X

SCHEDULE

- XS
- Call for extended Schedules

L

BODY / WEDGE MATERIAL

- CS Body / 316/316L Wedge
- CS Body / CS Wedge

- 3
- 1

PROCESS CONNECTION

- RF flange 150# WN
- RF flange 300# WN

- A
- B

INSTRUMENT CONNECTION

- 1/4" NPT (1/2...3" NPS)
- 1/2" NPT (>3" NPS)
- 1/2" Socket Weld

- H
- I
- J

BETA

- (0.2) Low Flow
- (0.3) Med/Low Flow
- (0.4) Normal Flow
- (0.5) High Flow

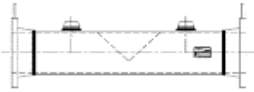
- 1
- 2
- 3
- 4

Continued from
previous page



<u>INSTRUMENT VALVE</u>							
Not Required	Z						
1/4" Needle CS	A						
1/2" Needle CS	B						
1/4" Needle SS	C						
1/2" Needle SS	D						
1/2" Gate w/Cross CS (Steam)	E						
1/2" Gate w/Cross SS (Steam)	F						
<u>CALIBRATION</u>							
Not Required	Z						
Factory Calibration (6 point)	1						
Special Factory Calibration	2						
External Calibration	3						
<u>TRANSMITTER MOUNTING</u>							
Remote Mount	Z						
Mounting Bracket Tee (only)	2						
Manifold Mounting Plate- Meter Mount (Does not include manifold)	3						
<u>CERTIFICATIONS</u>							
None	Z						
Tracable Material Certifications	1						
NACE MR0-103	2						
NACE MR0-175	3						
Items 1 and 2	4						
Items 1 and 3	5						
Other	X						
<u>STANDARD NDE TESTING</u>							
None	Z						
Hydrostatic Test Only (1/2...12" NPS 150# to 900# flange - Others CF)	1						
5% Radiography of Butt Welds	2						
100% Radiography of Butt Welds	3						
5% Magnetic particle/dye penetrant	4						
100% magnetic particle/dye penetrant	5						
Items 2 and 4 (1/2...12" NPS - Others CF)	6						
Items 3 and 4 (1/2...12" NPS - Others CF)	7						
Items 3 and 5 (1/2...12" NPS - Others CF)	8						
Other	X						
Note: Items 2-8 also include hydrostatic testing							
<u>OTHER NDE TESTING</u>							
None	Z						
100% Visual Inspection with Report	1						
PMI (Positive Material Identification)	2						
Post-Weld Harness Testing	3						
Items 1 and 2	4						
Items 3 and 4	5						
Items 1, 2 and 3	6						
<u>HARDCOATING</u>							
None	Z						
Tungsten Carbide (WC) on wedge	1						
Tungsten Carbide (WC) on center 1/3 of meter	2						
Chromium Carbide (CrC) on wedge	3						
Chromium Carbide (CrC) on center 1/3 of meter	4						
Other	X						
<u>TERTIARY TAP</u>							
None	Z						
3/4" Standard RTD Temperature with Thermowell (-200... 450° F)	A						
3/4" High Temperature RTD Temperature (-200...1000° F)	B						
1/2" Pressure Tap w/o transmitter	C						
1/2" Pressure Absolute with transmitter	D						
1/2" Pressure Gauge with transmitter	E						

COIN® Segmented Wedge
Carbon Steel - SCH 160
Flanged WN



PCO -



Continued on next page

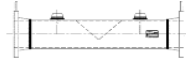
<u>PIPE SIZE</u>							
1/2"	A						
3/4"	B						
1"	C						
1-1/4"	D						
1-1/2"	E						
2"	F						
2-1/2"	G						
3"	H						
4"	I						
5"	J						
6"	K						
8"	L						
10"	M						
12"	N						
14"	O						
16"	P						
Call for extended sizes	X						
<u>SCHEDULE</u>							
160		K					
Call for extended Schedules							
<u>BODY / WEDGE MATERIAL</u>							
CS Body / 316/316L Wedge			3				
CS Body / CS Wedge			1				
<u>PROCESS CONNECTION</u>							
RF flange 150# WN				A			
RF flange 300# WN				B			
<u>INSTRUMENT CONNECTION</u>							
1/4" NPT (1/2...3" NPS)					H		
1/2" NPT (>3" NPS)					I		
1/2" Socket Weld					J		
<u>BETA</u>							
(0.2) Low Flow						1	
(0.3) Med/Low Flow						2	
(0.4) Normal Flow						3	
(0.5) High Flow						4	

Continued from
previous page



<u>INSTRUMENT VALVE</u>							
Not Required	Z						
1/4" Needle CS	A						
1/2" Needle CS	B						
1/4" Needle SS	C						
1/2" Needle SS	D						
1/2" Gate w/Cross CS (Steam)	E						
1/2" Gate w/Cross SS (Steam)	F						
<u>CALIBRATION</u>							
Not Required	Z						
Factory Calibration (6 point)	1						
Special Factory Calibration	2						
External Calibration	3						
<u>TRANSMITTER MOUNTING</u>							
Remote Mount	Z						
Mounting Bracket Tee (only)	2						
Manifold Mounting Plate- Meter Mount (Does not include manifold)	3						
<u>CERTIFICATIONS</u>							
None	Z						
Tracable Material Certifications	1						
NACE MR0-103	2						
NACE MR0-175	3						
Items 1 and 2	4						
Items 1 and 3	5						
Other	X						
<u>STANDARD NDE TESTING</u>							
None	Z						
Hydrostatic Test Only (1/2...12" NPS 150# to 900# flange - Others CF)	1						
5% Radiography of Butt Welds	2						
100% Radiography of Butt Welds	3						
5% Magnetic particle/dye penetrant	4						
100% magnetic particle/dye penetrant	5						
Items 2 and 4 (1/2...12" NPS - Others CF)	6						
Items 3 and 4 (1/2...12" NPS - Others CF)	7						
Items 3 and 5 (1/2...12" NPS - Others CF)	8						
Other	X						
Note: Items 2-8 also include hydrostatic testing							
<u>OTHER NDE TESTING</u>							
None	Z						
100% Visual Inspection with Report	1						
PMI (Positive Material Identification)	2						
Post-Weld Harness Testing	3						
Items 1 and 2	4						
Items 3 and 4	5						
Items 1, 2 and 3	6						
<u>HARDCOATING</u>							
None	Z						
Tungsten Carbide (WC) on wedge	1						
Tungsten Carbide (WC) on center 1/3 of meter	2						
Chromium Carbide (CrC) on wedge	3						
Chromium Carbide (CrC) on center 1/3 of meter	4						
Other	X						
<u>TERTIARY TAP</u>							
None	Z						
3/4" Standard RTD Temperature with Thermowell (-200... 450° F)	A						
3/4" High Temperature RTD Temperature (-200...1000° F)	B						
1/2" Pressure Tap w/o transmitter	C						
1/2" Pressure Absolute with transmitter	D						
1/2" Pressure Gauge with transmitter	E						

COIN® Segmented Wedge
Carbon Steel - SCH STD
Flanged SO



Continued on next page

PIPE SIZE							
1/2"	A						
3/4"	B						
1"	C						
1-1/4"	D						
1-1/2"	E						
2"	F						
2-1/2"	G						
3"	H						
4"	I						
5"	J						
6"	K						
8"	L						
10"	M						
12"	N						
14"	O						
16"	P						
Call for extended sizes	X						
SCHEDULE							
STD		A					
Call for extended Schedules							
BODY / WEDGE MATERIAL							
CS Body / 316/316L Wedge			3				
PROCESS CONNECTION							
SORF 150# FLANGE					J		
SORF 300# FLANGE					K		
INSTRUMENT CONNECTION							
1/4" NPT (1/2...3" NPS)						H	
1/2" NPT (>3" NPS)						I	
1/2" Socket Weld						J	
BETA							
(0.2) Low Flow							1
(0.3) Med/Low Flow							2
(0.4) Normal Flow							3
(0.5) High Flow							4

COIN® Segmented Wedge
STAINLESS STEEL -SCH XS
Flanged SO



Continued on next page

PIPE SIZE							
1/2"	A						
3/4"	B						
1"	C						
1-1/4"	D						
1-1/2"	E						
2"	F						
2-1/2"	G						
3"	H						
4"	I						
5"	J						
6"	K						
8"	L						
10"	M						
12"	N						
14"	O						
16"	P						
Call for extended sizes	X						
SCHEDULE							
XS		L					
Call for extended Schedules							
BODY / WEDGE MATERIAL							
CS Body / 316/316L Wedge			3				
CS Body / CS Wedge			1				
PROCESS CONNECTION							
SORF 150# FLANGE					J		
SORF 300# FLANGE					K		
INSTRUMENT CONNECTION							
1/4" NPT (1/2...3" NPS)						H	
1/2" NPT (>3" NPS)						I	
1/2" Socket Weld						J	
BETA							
(0.2) Low Flow							1
(0.3) Med/Low Flow							2
(0.4) Normal Flow							3
(0.5) High Flow							4

Continued from
previous page



<u>INSTRUMENT VALVE</u>							
Not Required	Z						
1/4" Needle CS	A						
1/2" Needle CS	B						
1/4" Needle SS	C						
1/2" Needle SS	D						
1/2" Gate w/Cross CS (Steam)	E						
1/2" Gate w/Cross SS (Steam)	F						
<u>CALIBRATION</u>							
Not Required	Z						
Factory Calibration (6 point)	1						
Special Factory Calibration	2						
External Calibration	3						
<u>TRANSMITTER MOUNTING</u>							
Remote Mount	Z						
Mounting Bracket Tee (only)	2						
Manifold Mounting Plate- Meter Mount (Does not include manifold)	3						
<u>CERTIFICATIONS</u>							
None	Z						
Tracable Material Certifications	1						
NACE MR0-103	2						
NACE MR0-175	3						
Items 1 and 2	4						
Items 1 and 3	5						
Other	X						
<u>STANDARD NDE TESTING</u>							
None	Z						
Hydrostatic Test Only (1/2...12" NPS 150# to 900# flange - Others CF)	1						
5% Radiography of Butt Welds	2						
100% Radiography of Butt Welds	3						
5% Magnetic particle/dye penetrant	4						
100% magnetic particle/dye penetrant	5						
Items 2 and 4 (1/2...12" NPS - Others CF)	6						
Items 3 and 4 (1/2...12" NPS - Others CF)	7						
Items 3 and 5 (1/2...12" NPS - Others CF)	8						
Other	X						
Note: Items 2-8 also include hydrostatic testing							
<u>OTHER NDE TESTING</u>							
None	Z						
100% Visual Inspection with Report	1						
PMI (Positive Material Identification)	2						
Post-Weld Harness Testing	3						
Items 1 and 2	4						
Items 3 and 4	5						
Items 1, 2 and 3	6						
<u>HARDCOATING</u>							
None	Z						
Tungsten Carbide (WC) on wedge	1						
Tungsten Carbide (WC) on center 1/3 of meter	2						
Chromium Carbide (CrC) on wedge	3						
Chromium Carbide (CrC) on center 1/3 of meter	4						
Other	X						
<u>TERTIARY TAP</u>							
None	Z						
3/4" Standard RTD Temperature with Thermowell (-200... 450° F)	A						
3/4" High Temperature RTD Temperature (-200...1000° F)	B						
1/2" Pressure Tap w/o transmitter	C						
1/2" Pressure Absolute with transmitter	D						
1/2" Pressure Gauge with transmitter	E						

COIN® Segmented Wedge
Carbon Steel - SCH 160
Flanged SORF



PCO



Continued on next page

PIPE SIZE					
1/2"	A				
3/4"	B				
1"	C				
1-1/4"	D				
1-1/2"	E				
2"	F				
2-1/2"	G				
3"	H				
4"	I				
5"	J				
6"	K				
8"	L				
10"	M				
12"	N				
14"	O				
16"	P				
Call for extended sizes	X				
SCHEDULE					
160		K			
Call for extended Schedules					
BODY / WEDGE MATERIAL					
CS Body / 316/316L Wedge			3		
CS Body / CS Wedge			1		
PROCESS CONNECTION					
SORF 150# FLANGE				J	
SORF 300# FLANGE				K	
INSTRUMENT CONNECTION					
1/4" NPT (1/2...3" NPS)					H
1/2" NPT (>3" NPS)					I
1/2" Socket Weld					J
BETA					
(0.2) Low Flow					1
(0.3) Med/Low Flow					2
(0.4) Normal Flow					3
(0.5) High Flow					4

Continued from
previous page



<u>INSTRUMENT VALVE</u>							
Not Required	Z						
1/4" Needle CS	A						
1/2" Needle CS	B						
1/4" Needle SS	C						
1/2" Needle SS	D						
1/2" Gate w/Cross CS (Steam)	E						
1/2" Gate w/Cross SS (Steam)	F						
<u>CALIBRATION</u>							
Not Required	Z						
Factory Calibration (6 point)	1						
Special Factory Calibration	2						
External Calibration	3						
<u>TRANSMITTER MOUNTING</u>							
Remote Mount	Z						
Mounting Bracket Tee (only)	2						
Manifold Mounting Plate- Meter Mount (Does not include manifold)	3						
<u>CERTIFICATIONS</u>							
None	Z						
Tracable Material Certifications	1						
NACE MR0-103	2						
NACE MR0-175	3						
Items 1 and 2	4						
Items 1 and 3	5						
Other	X						
<u>STANDARD NDE TESTING</u>							
None	Z						
Hydrostatic Test Only (1/2...12" NPS 150# to 900# flange - Others CF)	1						
5% Radiography of Butt Welds	2						
100% Radiography of Butt Welds	3						
5% Magnetic particle/dye penetrant	4						
100% magnetic particle/dye penetrant	5						
Items 2 and 4 (1/2...12" NPS - Others CF)	6						
Items 3 and 4 (1/2...12" NPS - Others CF)	7						
Items 3 and 5 (1/2...12" NPS - Others CF)	8						
Other	X						
Note: Items 2-8 also include hydrostatic testing							
<u>OTHER NDE TESTING</u>							
None	Z						
100% Visual Inspection with Report	1						
PMI (Positive Material Identification)	2						
Post-Weld Harness Testing	3						
Items 1 and 2	4						
Items 3 and 4	5						
Items 1, 2 and 3	6						
<u>HARDCOATING</u>							
None	Z						
Tungsten Carbide (WC) on wedge	1						
Tungsten Carbide (WC) on center 1/3 of meter	2						
Chromium Carbide (CrC) on wedge	3						
Chromium Carbide (CrC) on center 1/3 of meter	4						
Other	X						
<u>TERTIARY TAP</u>							
None	Z						
3/4" Standard RTD Temperature with Thermowell (-200... 450° F)	A						
3/4" High Temperature RTD Temperature (-200...1000° F)	B						
1/2" Pressure Tap w/o transmitter	C						
1/2" Pressure Absolute with transmitter	D						
1/2" Pressure Gauge with transmitter	E						

INTENTIONAL BLANK PAGE

INTENTIONAL BLANK PAGE

Control. Manage. Optimize.

Preso and Coin are registered trademarks of Badger Meter, Inc. Other trademarks appearing in this document are the property of their respective entities. Due to continuous research, product improvements and enhancements, Badger Meter reserves the right to change product or system specifications without notice, except to the extent an outstanding contractual obligation exists. © 2021 Badger Meter, Inc. All rights reserved.

www.badgermeter.com